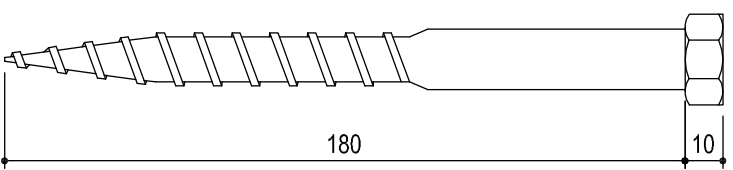
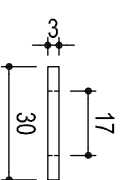


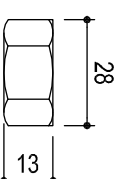
TIRFOND Ø 16 (192)
LAG BOLT Ø 16 (192)



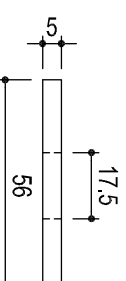
RONDELLE M16 (192)
RING M16 (192)



ECROU M16 (16)
NUT M16 (16)

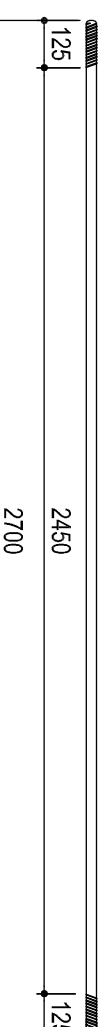


RONDELLE M16 (16)
RING M16 (16)

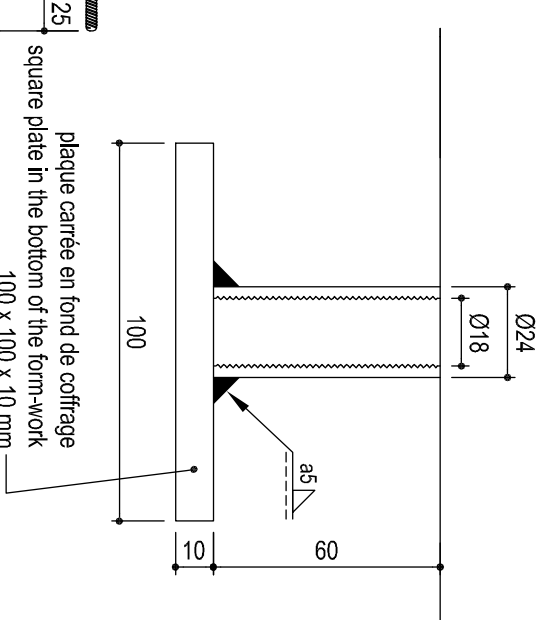


ANNEAUX DE LEVAGE
ARTICULES (4)
PINNED LIFTING
RINGS (4)
Type 1690 M1203

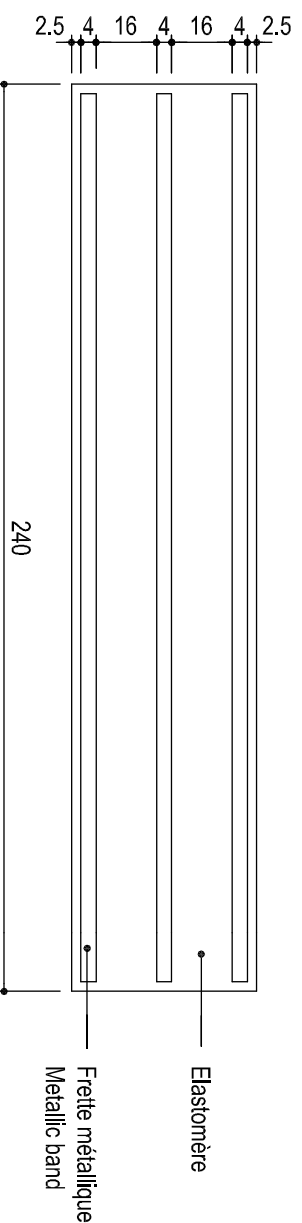
DOUILLES (16)
SLEEVES (16)



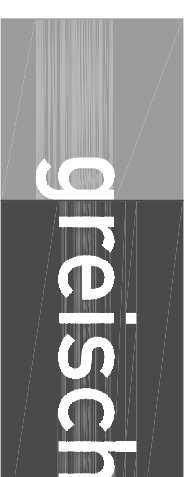
BARRE FILETEE Ø16 (8)
THREAD REBAR Ø16 (8)



PLAQUE APPUI EN NEOPRENE (240 x 300 x 49) (8)
ELASTOMERIC BEARING PLATE (240 x 300 x 49) (8)



⚠ Les plans et le prototype NR2C - BLC - BFUP sont la propriété intellectuelle de l'équipe NR2C - WP3
REPRODUCTIONS ET USAGES COMMERCIAUX INTERDIT
The plans and prototype NR2C - BLC - BFUP are the intellectual property of the NR2C - WP3
COMMERCIAL USES AND REPRODUCTIONS ARE NOT ALLOWED



Dossier BEG : 3535		Fichier BEG : 006	
MATERIAUX			
07-12-06	EO	FGE	modifications connexions et appuis
03-11-06	EO	FGE	modifications suivant remarques réunion 30-10-06
30-10-06	EO	FGE	Première diffusion
Date	Dess.	Verif.	Modifications
Date : 30-10-2006		FICHE ACCESSOIRES	
Ech. : variable			
			IND
			B